

# LED Test Report

## Product Mark

Product Type : NEO4LT-300-120822-5

Manufacturer :

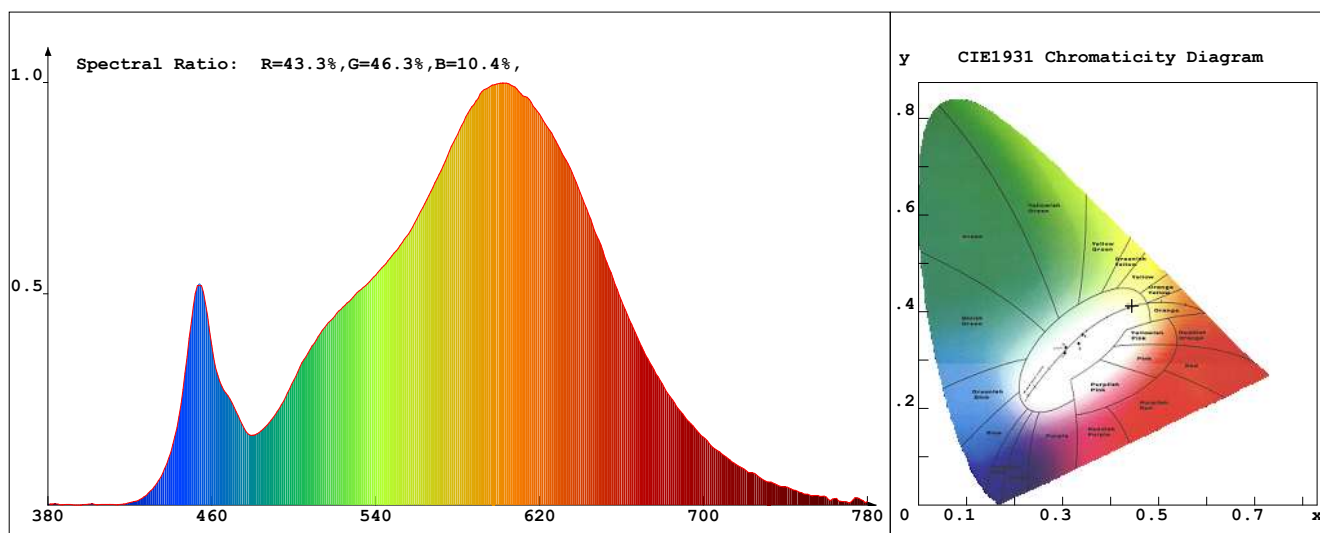
Temperature : 'C

Humidity : %

Operator :

Test Date : 15-11-21 14:33:34

Remark :



## Chroma Parameters

Chro.Coord.: x=0.4444 y=0.4125 u=0.2517 v=0.3505 duv=0.0023

CCT: 2946K Dominant Wave.: 582.3nm Purity: 57.2% Centre Wave: 593.4nm

Flux RGB Ratio: R=21.9%, G=76.5%, B=1.5% Peak Wave: 601.8nm Half Width: 127.8nm

## Rendering Index: Ra= 81.4 CRI= 78.1

R1 =79 R2 =90 R3 =97 R4 =79 R5 =79 R6 =88 R7 =83 R8 =57

R9 =3 R10=77 R11=78 R12=66 R13=81 R14=99 R15=71

PPF: 1.653umol/s (400-700nm)

PRF: 0.3mW (400-700nm)

PAR: 0.3mW (400-700nm)

## Photo Parameters

Flux: 124.44lm Effi.: 29.0lm/W Radiant: 351.3mW Iv: 0.0mcd

Scotopic Flux: 161.4Plm Effi.: 0.0Plm/W S/P: 1.3

Efficiency: 0.00

Effi Level: A++ (EU 874-2012) Photon Flux: 1714.650umol/s (380-780nm)

## Ele. Parameters

Voltage: U=23.49V

Current: I=0.1830A

Power: P=4.310W

Power Factor: PF=1.000

## Instrument state

Instrument: Lisun

Integral Time: 1000.000ms

VPeak: 12504

VDark: 1414

Scan Range: 380-780nm

Product ID: 201508924

# IES TM-30-2015 Test Report

## Product Mark

Product Type : NEO4LT-300-120822-5

Temperature : 'C

Operator :

Remark :

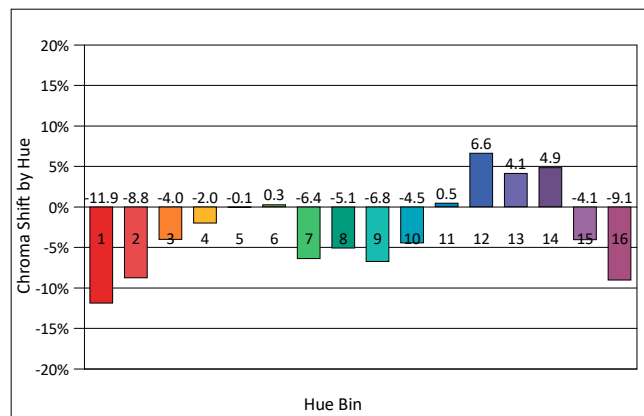
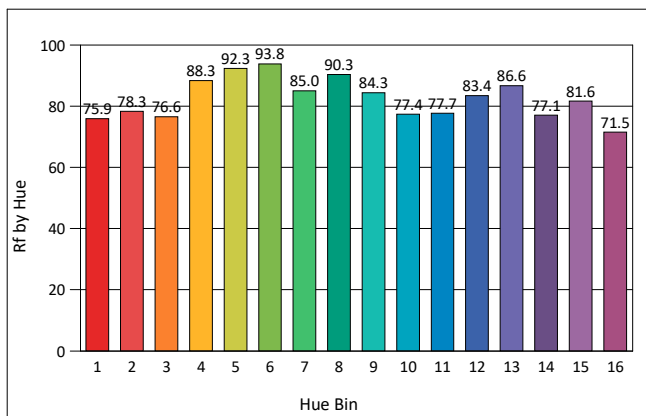
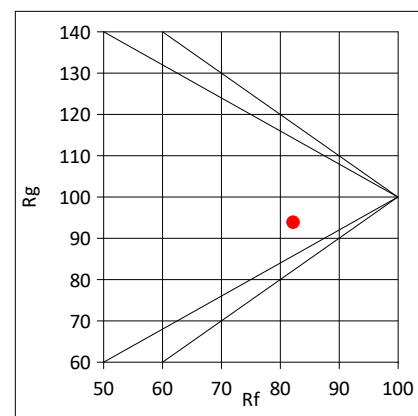
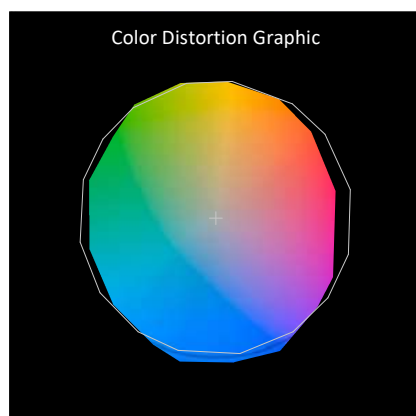
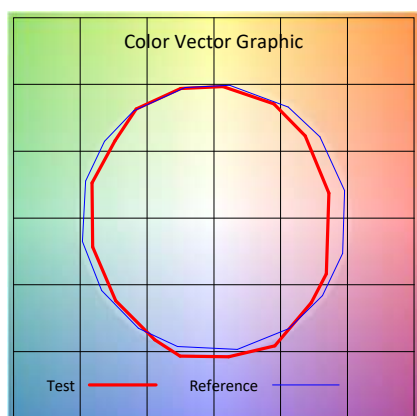
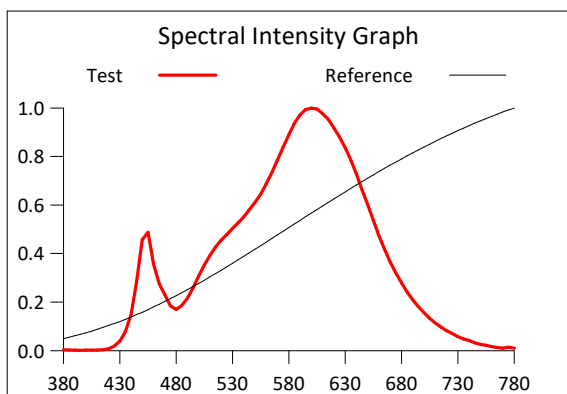
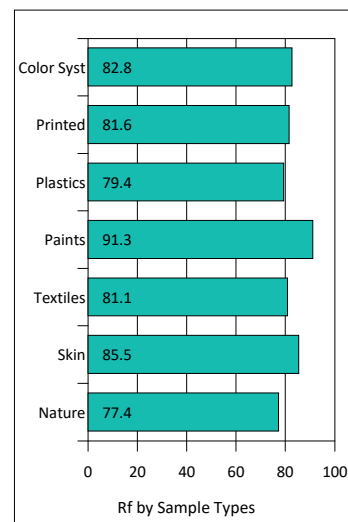
Manufacturer :

Humidity : %

Test Date : 15-11-21 14:33:34

Rf: 82.2      CCT(K): 2946      u': 0.2517  
 Rg: 93.8      LER: 334.5      Duv: 0.0023      v': 0.3505

Hue Bin	Graphic Shifts (%)		
	Rf	Chroma	Hue
1	75.9	-11.9%	0.3%
2	78.3	-8.8%	6.5%
3	76.6	-4.0%	10.3%
4	88.3	-2.0%	4.8%
5	92.3	-0.1%	3.5%
6	93.8	0.3%	-2.3%
7	85.0	-6.4%	-4.9%
8	90.3	-5.1%	0.5%
9	84.3	-6.8%	5.5%
10	77.4	-4.5%	12.2%
11	77.7	0.5%	14.8%
12	83.4	6.6%	3.4%
13	86.6	4.1%	-7.4%
14	77.1	4.9%	-16.0%
15	81.6	-4.1%	-9.0%
16	71.5	-9.1%	-17.5%



# IES TM-30-2015 Test Report

## Product Mark

Product Type : NEO4LT-300-120822-5

Manufacturer :

Temperature : 'C

Humidity : %

Operator :

Test Date : 15-11-21 14:33:34

Remark :

